

## GRADUATE PROGRAM IN

# Mechanical Engineering

# SAN DIEGO STATE UNIVERSITY



**San Diego State University (SDSU)** is one of the most research active universities in the California State University System and is in the top seven percent of higher education research institutions in the U.S. The Department of Mechanical Engineering at SDSU offers graduate degrees at the Master's and PhD levels. Students have the opportunity to choose from many areas of research including engineering mechanics, bioengineering, powder technology, alternative energy, materials science, combustion, micro-electro-mechanical systems (MEMS), manufacturing, virtual reality, non-destructive evaluation, nano-technology, control and mechanical systems. The University is situated in San Diego, California, a city located on the pacific coast, with spectacular ocean and mountain views. With its high-tech industry, year-round sunny weather and mild climate, San Diego is considered one of the most beautiful cities in North America.



For more information about the graduate program, research activities and faculty profiles, visit our website at: <http://attila.sdsu.edu/me>

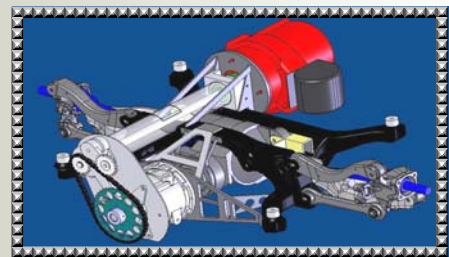
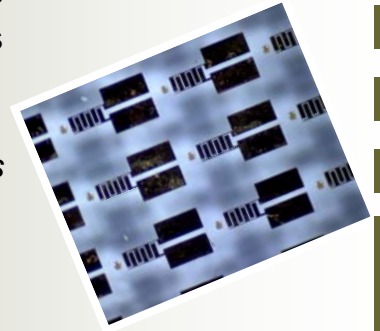
**Master of Science (MS) Degree** Prospective students can find application material and requirements at <http://arweb.sdsu.edu/es/admissions/graduate/applicationprocedures.html> and <http://attila.sdsu.edu/me>.

**Fall Deadline:** Domestic & International Applicants: May 1,

**Spring Deadline:** Domestic Applicants: November 1, International October 1

**Doctoral Degree (PhD):** Interested students should visit

<http://attila.sdsu.edu/jdp/>



SAN DIEGO STATE  
UNIVERSITY

Department of Mechanical Engineering  
San Diego State University  
5500 Campanile Drive  
San Diego, California 92182-1323, USA  
Tel: 1-619-594 6067, Fax: 1-619-594 3599

[www.sdsu.edu](http://www.sdsu.edu)

